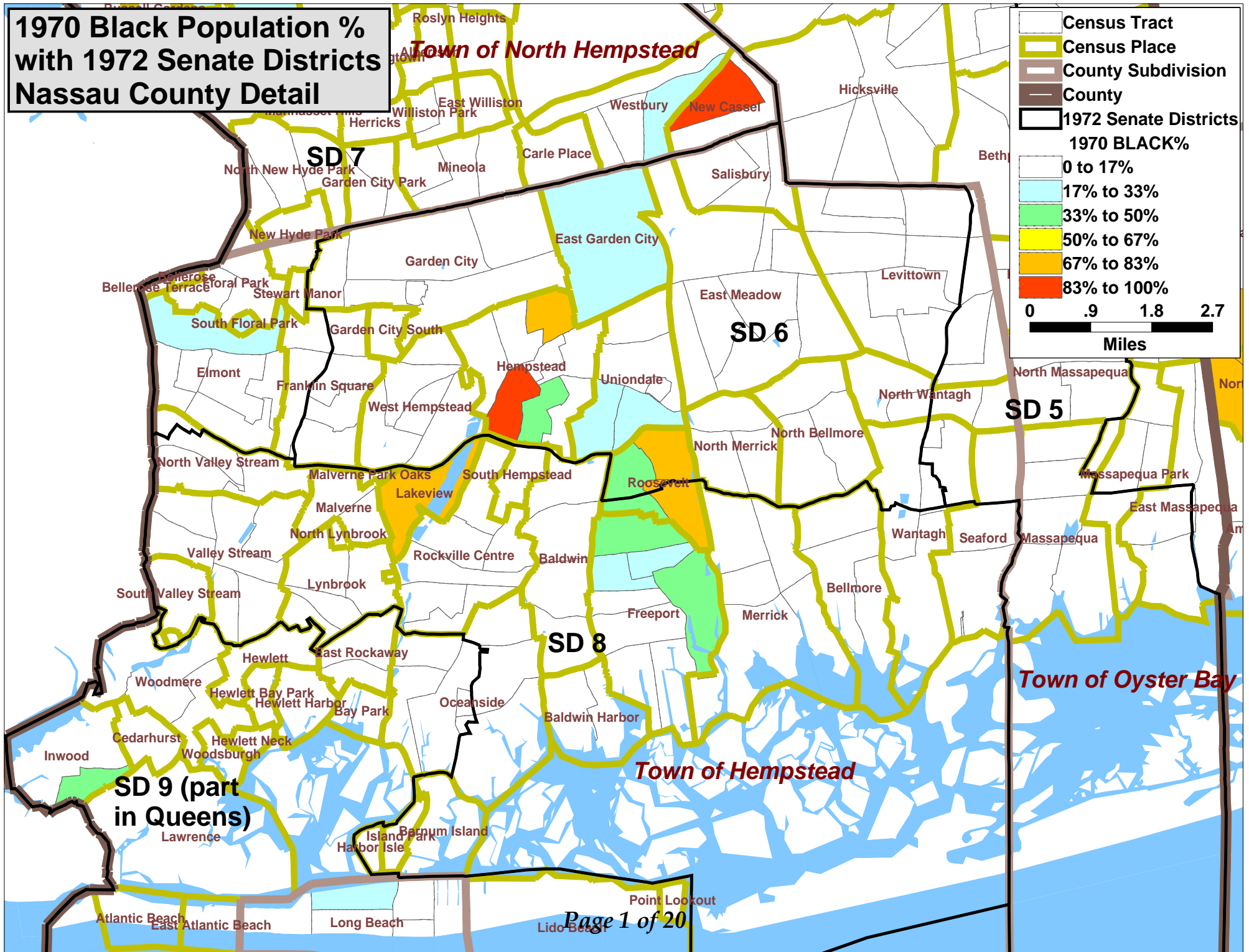
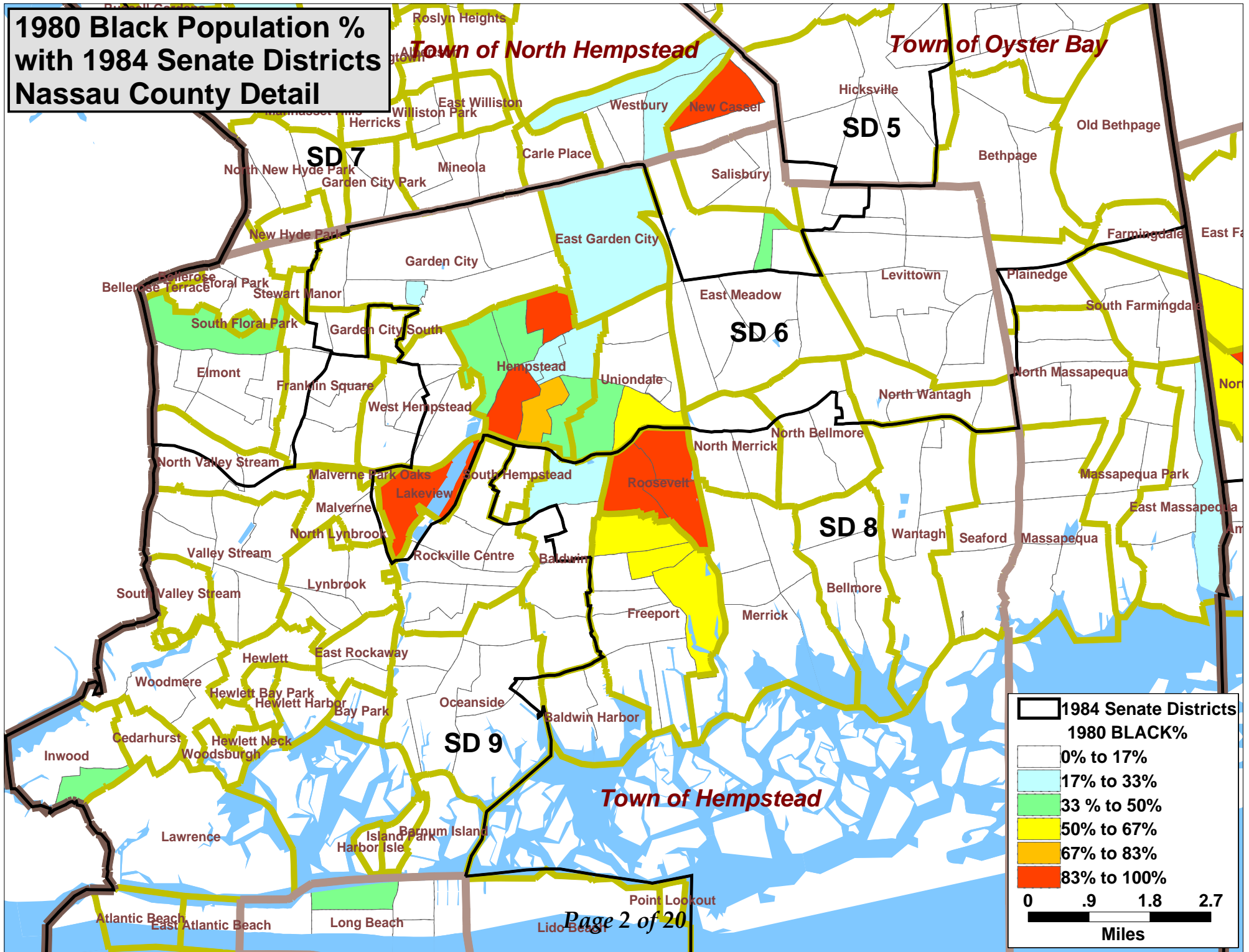


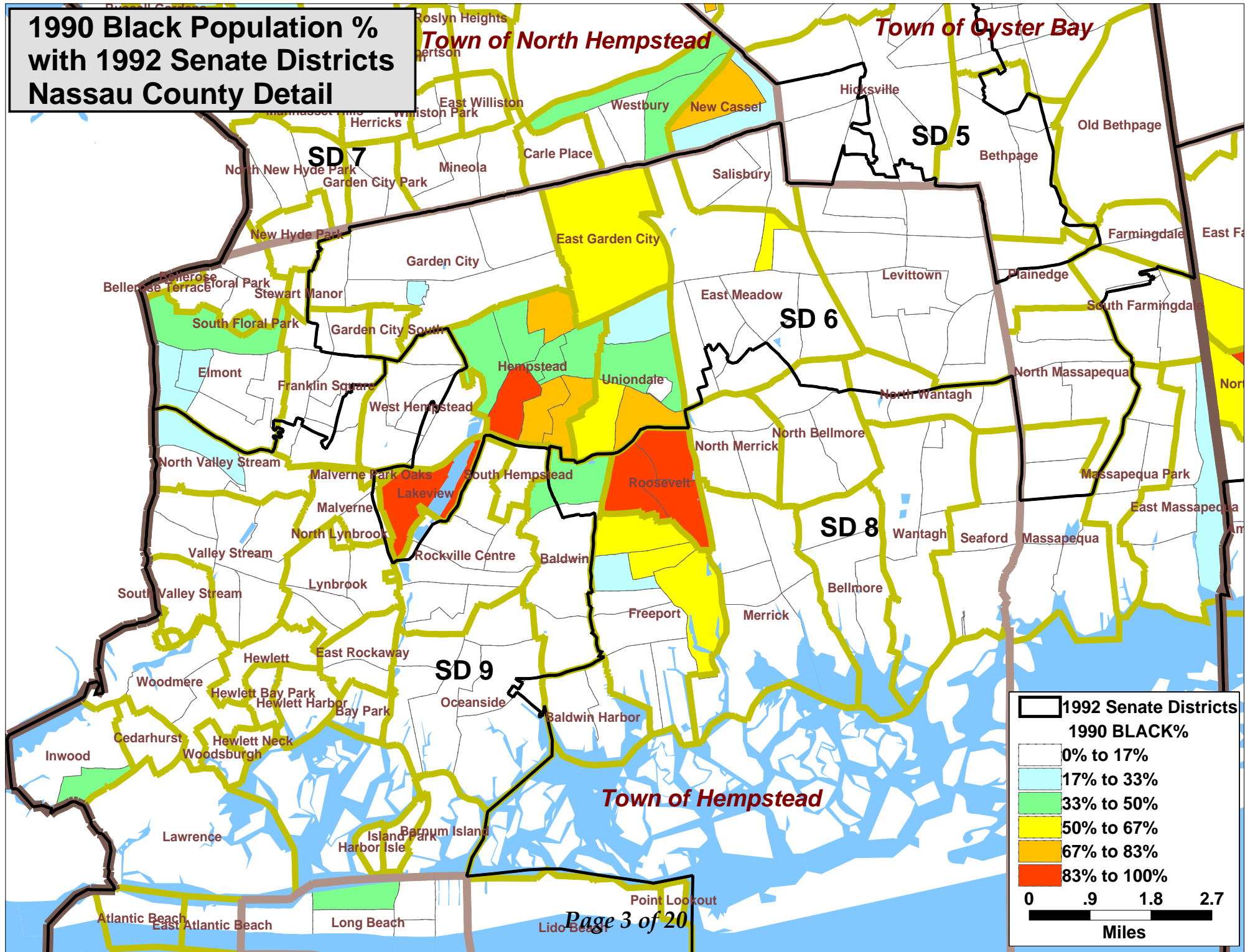
**1970 Black Population %
with 1972 Senate Districts
Nassau County Detail**



**1980 Black Population %
with 1984 Senate Districts
Nassau County Detail**



1990 Black Population % with 1992 Senate Districts Nassau County Detail



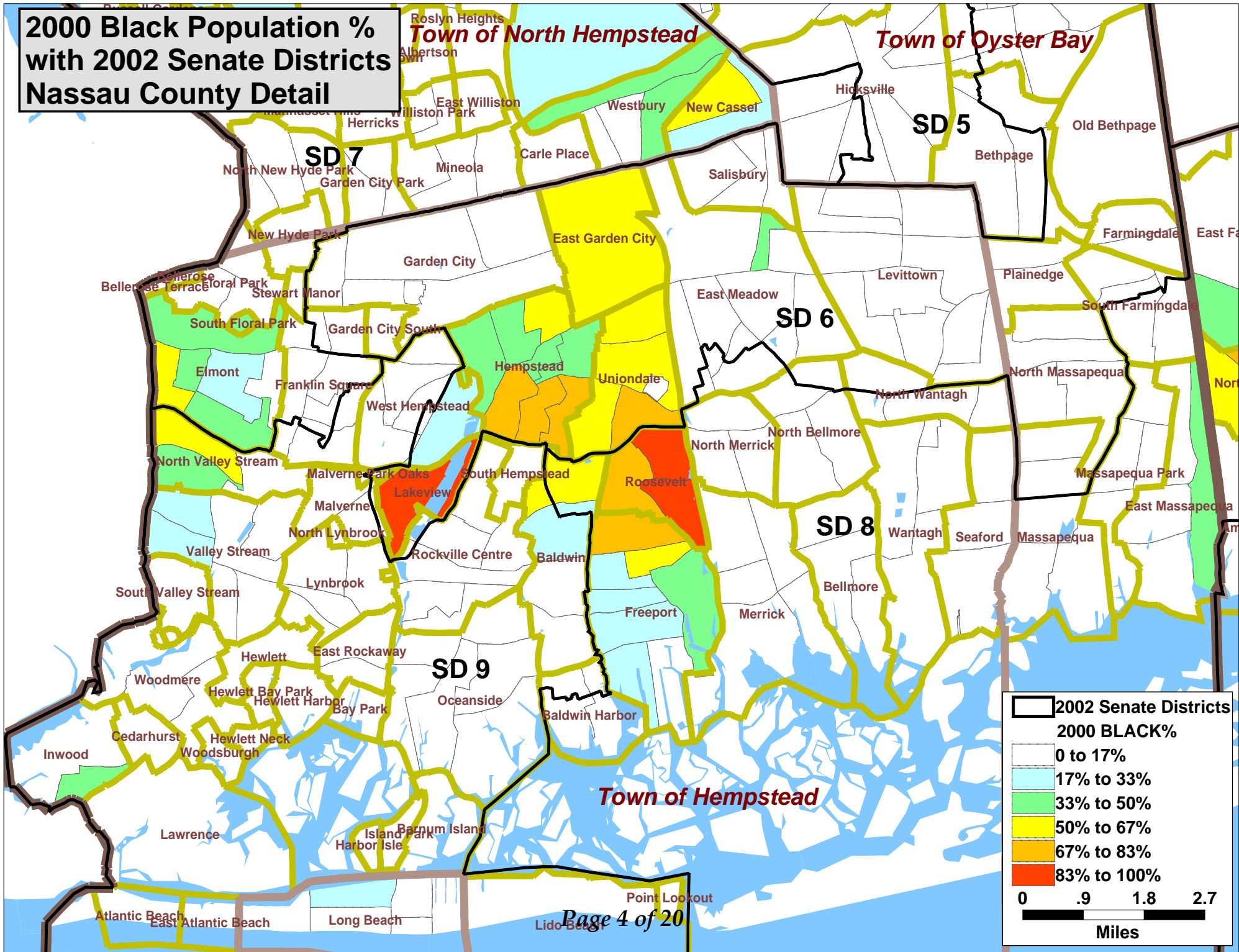
1992 Senate Districts

1990 BLACK%

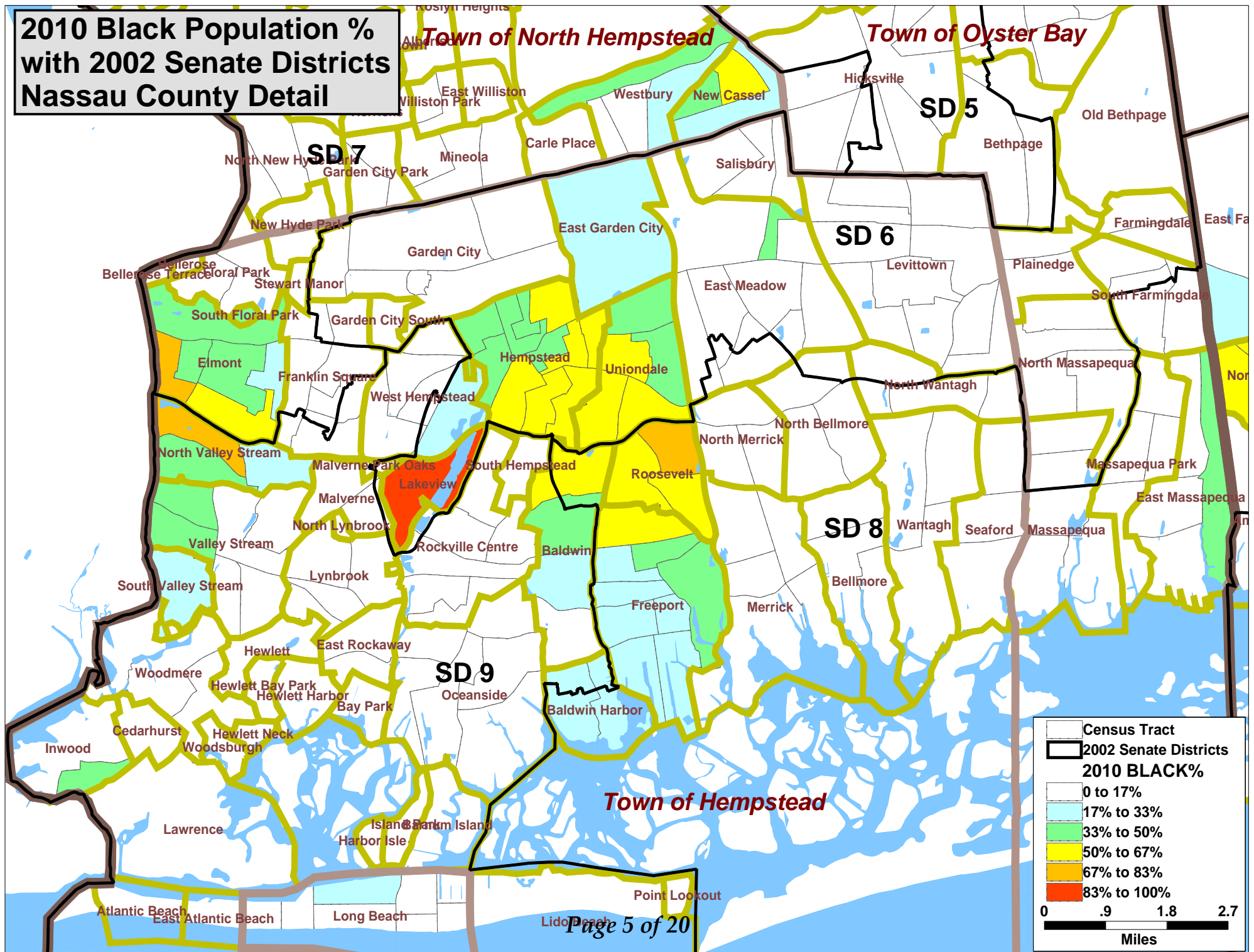
- 0% to 17%
- 17% to 33%
- 33% to 50%
- 50% to 67%
- 67% to 83%
- 83% to 100%

0 .9 1.8 2.7
Miles

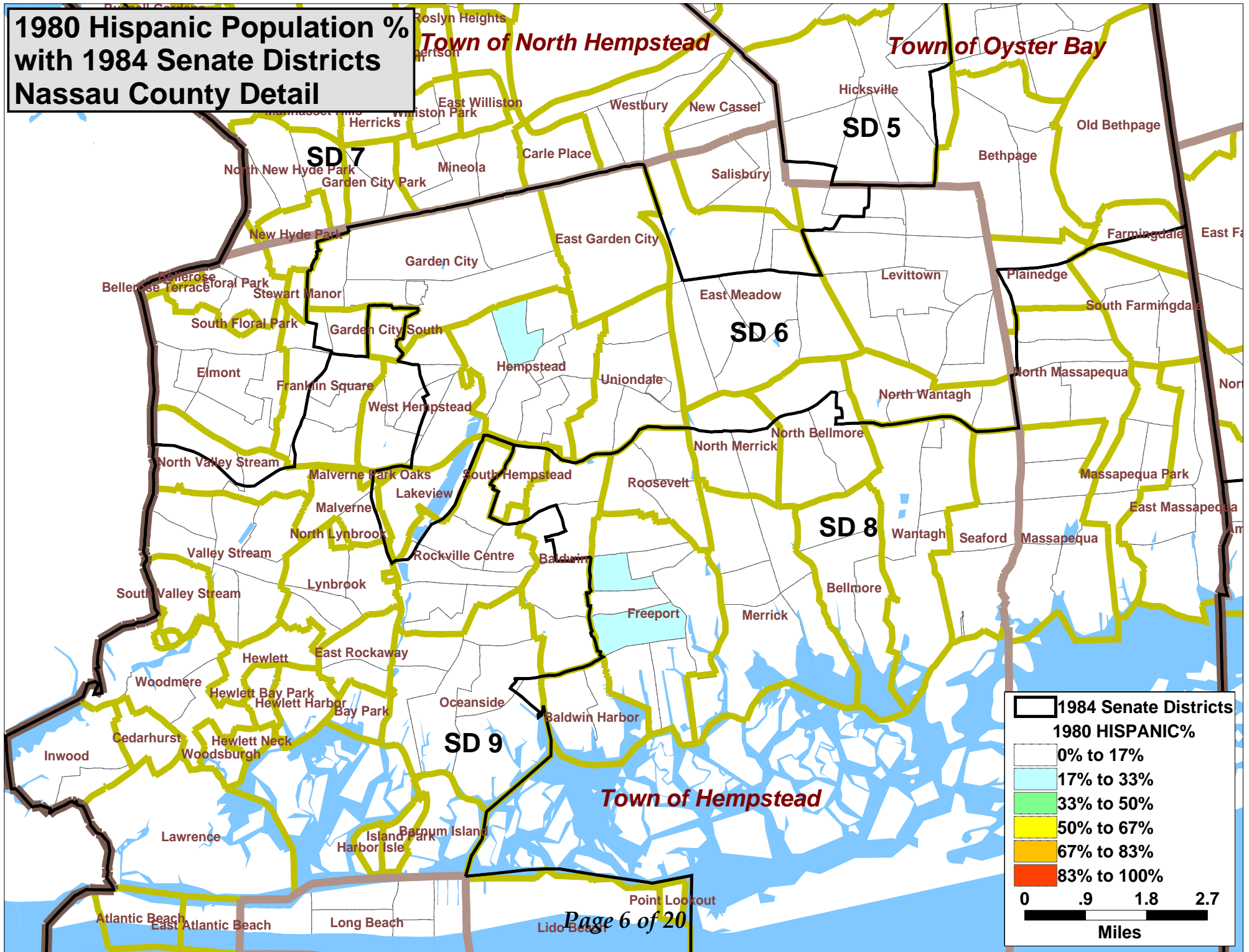
**2000 Black Population %
with 2002 Senate Districts
Nassau County Detail**



2010 Black Population % with 2002 Senate Districts Nassau County Detail



**1980 Hispanic Population %
with 1984 Senate Districts
Nassau County Detail**



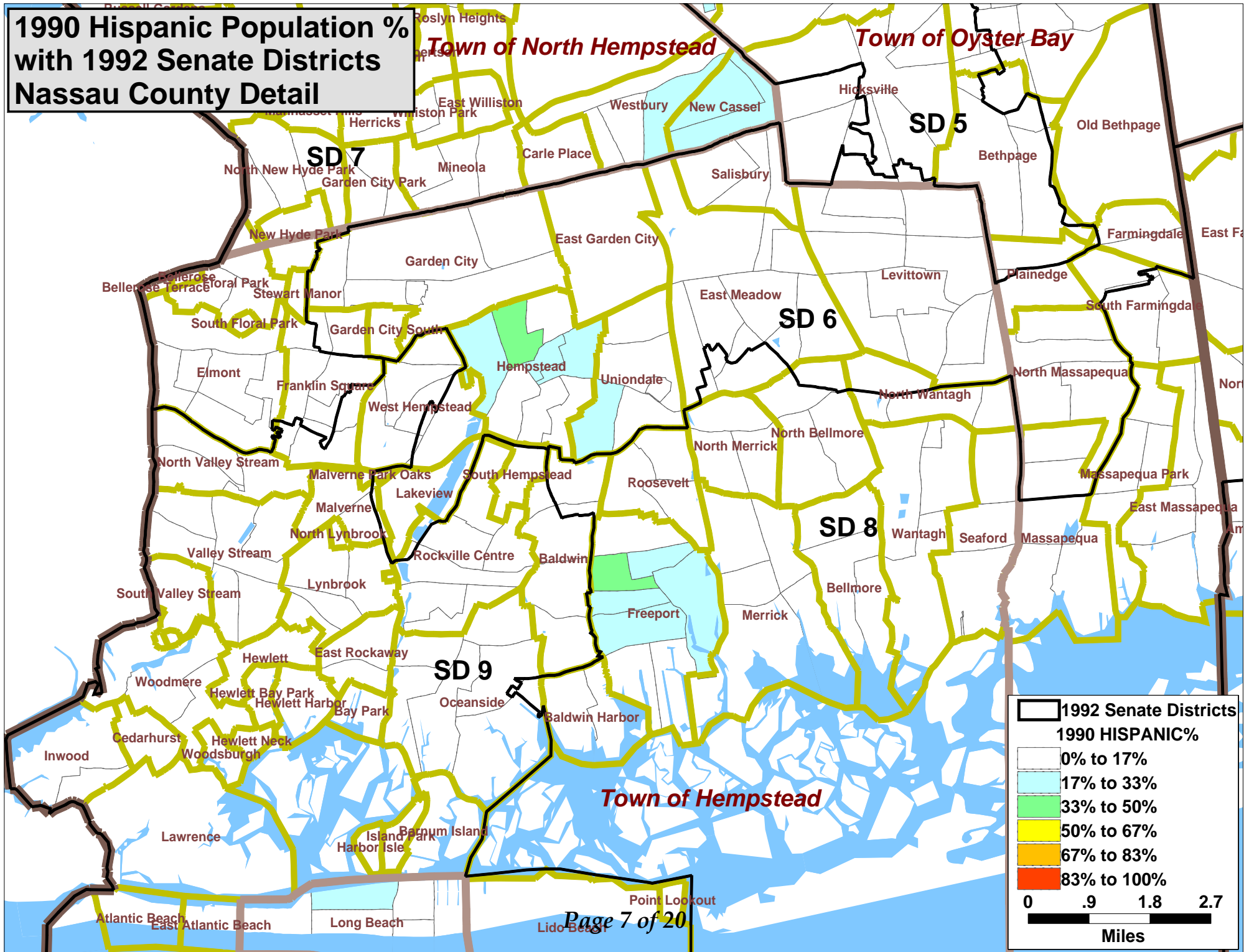
1984 Senate Districts

1980 HISPANIC%

- 0% to 17%
- 17% to 33%
- 33% to 50%
- 50% to 67%
- 67% to 83%
- 83% to 100%

0 .9 1.8 2.7
Miles

**1990 Hispanic Population %
with 1992 Senate Districts
Nassau County Detail**



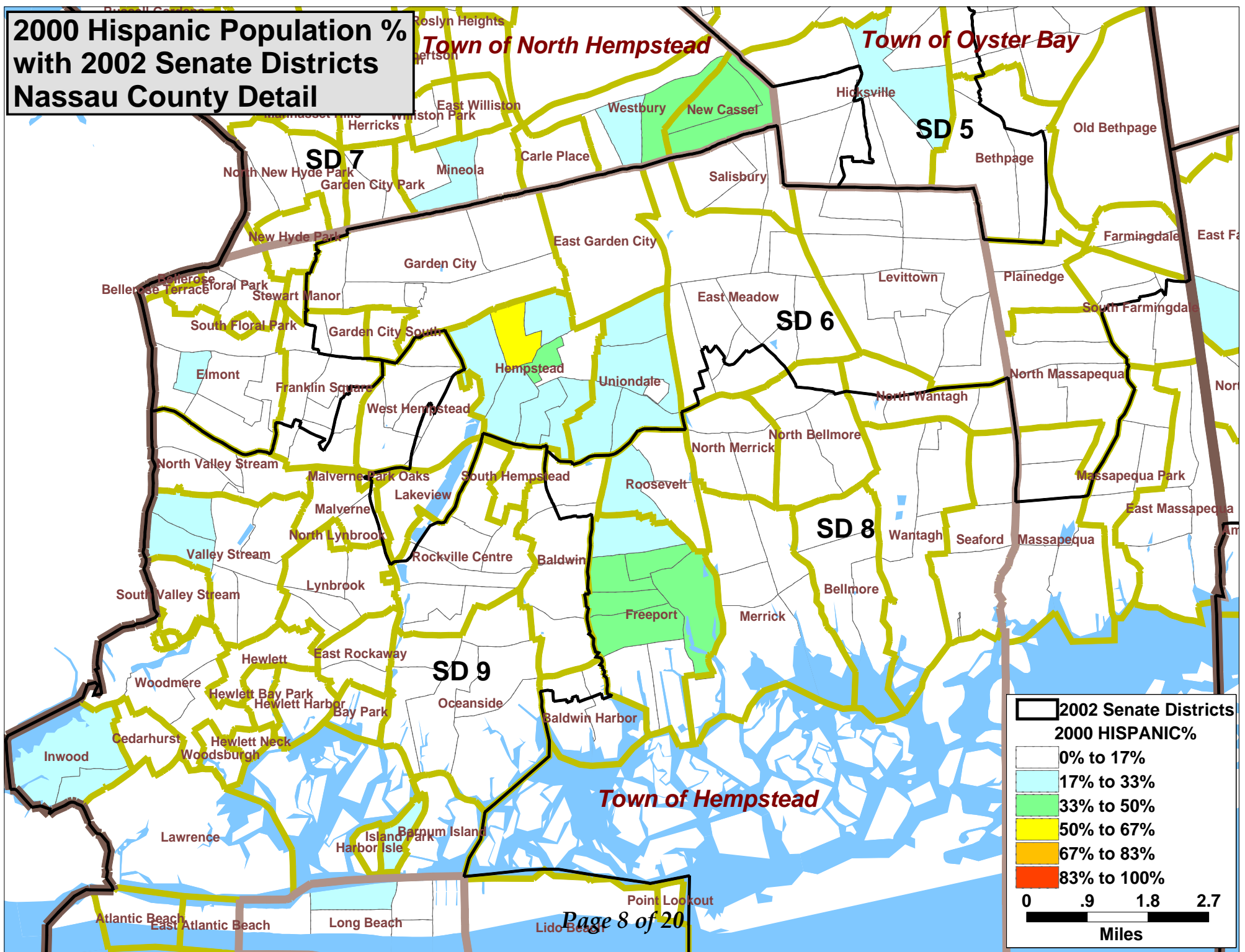
1992 Senate Districts

1990 HISPANIC%

- 0% to 17%
- 17% to 33%
- 33% to 50%
- 50% to 67%
- 67% to 83%
- 83% to 100%

0 .9 1.8 2.7
Miles

**2000 Hispanic Population %
with 2002 Senate Districts
Nassau County Detail**



2002 Senate Districts

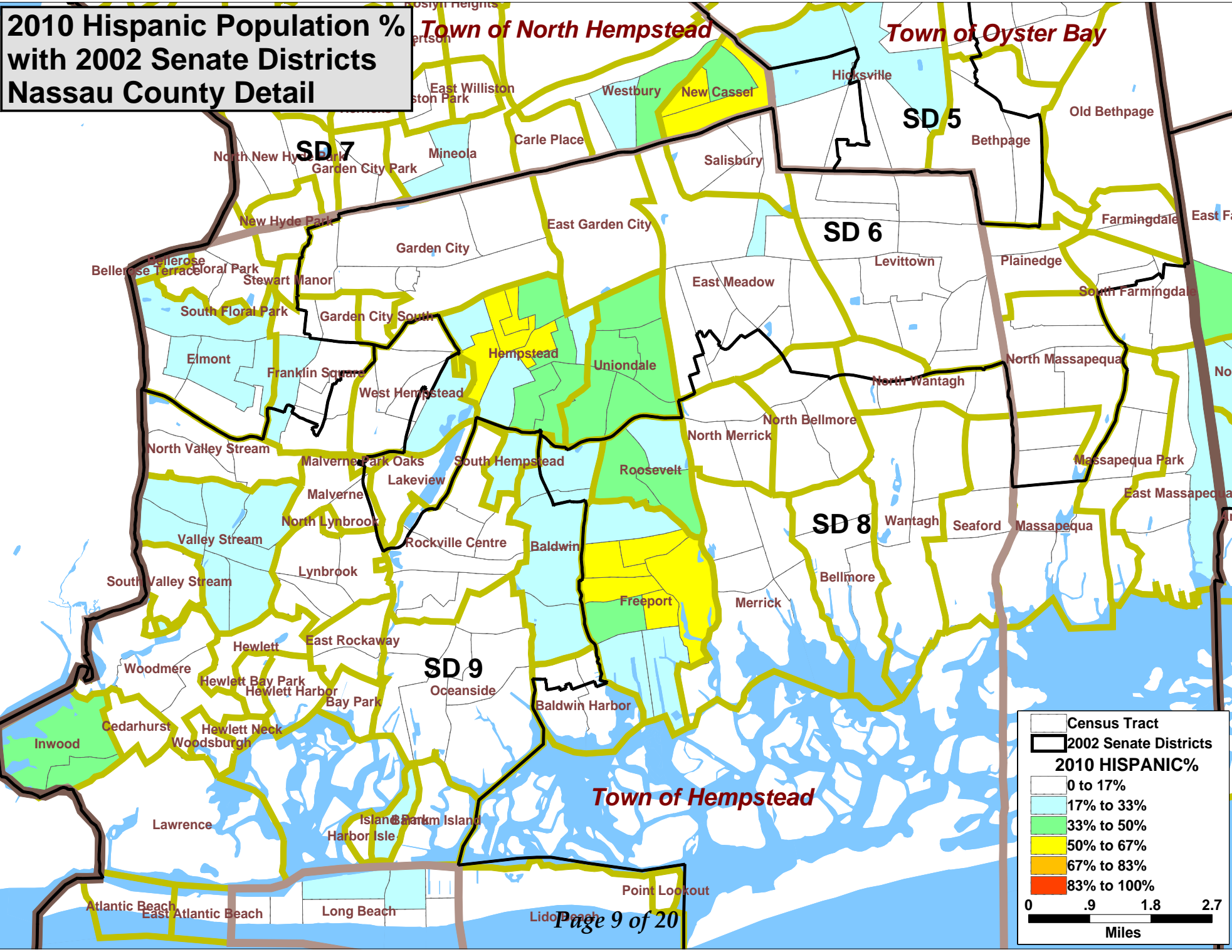
2000 HISPANIC%

- 0% to 17%
- 17% to 33%
- 33% to 50%
- 50% to 67%
- 67% to 83%
- 83% to 100%

0 .9 1.8 2.7

Miles

**2010 Hispanic Population %
with 2002 Senate Districts
Nassau County Detail**

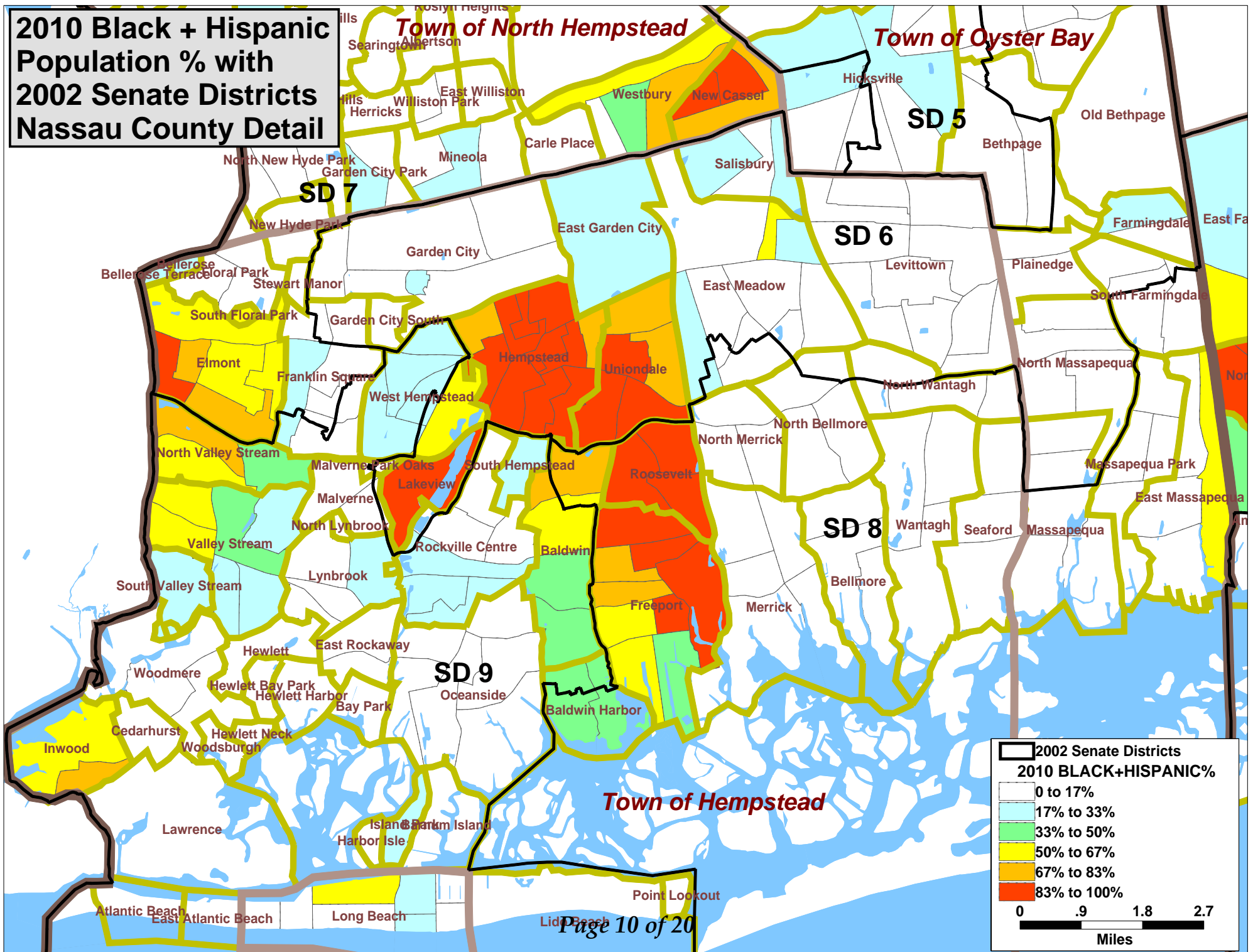


Census Tract
2002 Senate Districts
2010 HISPANIC%

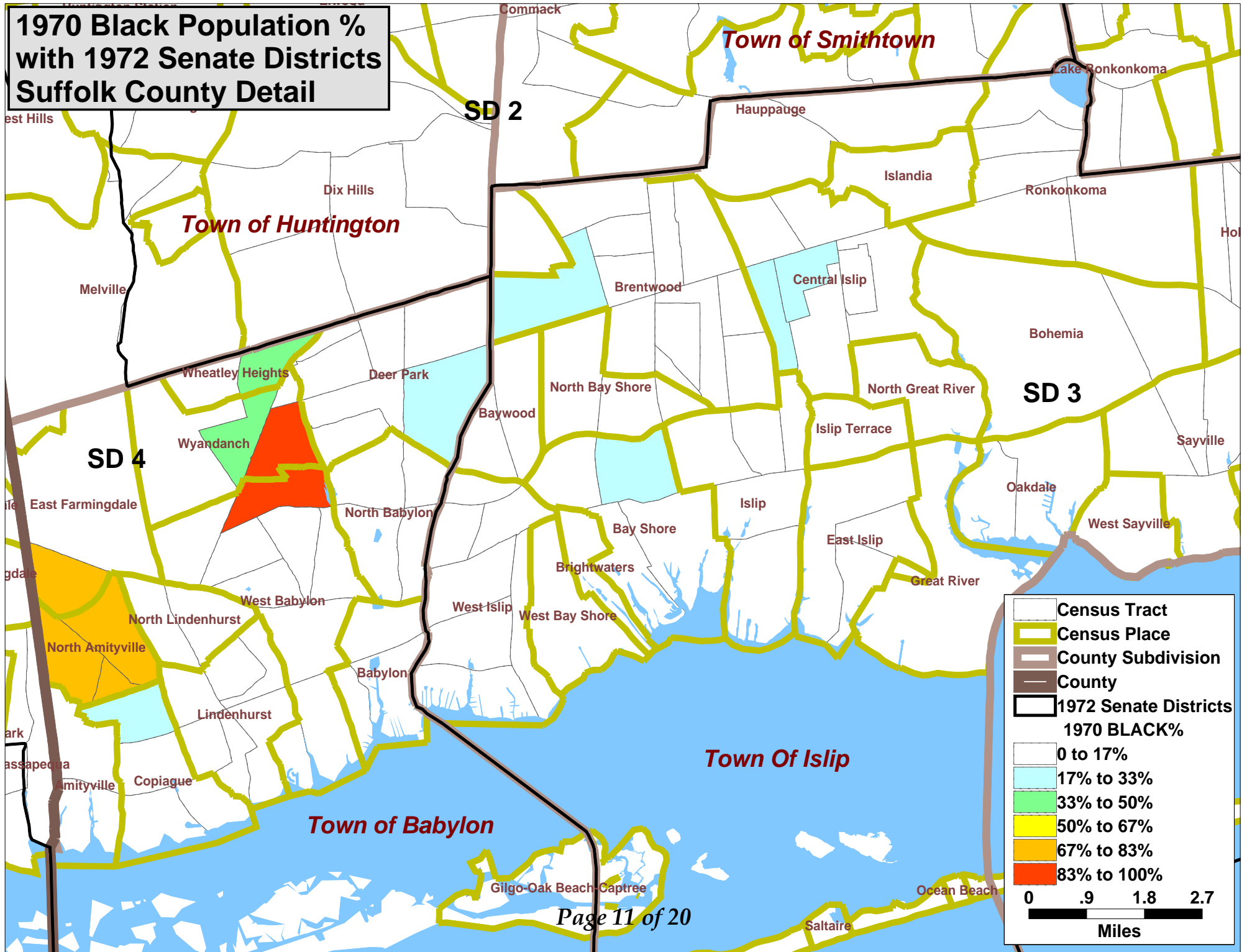
- 0 to 17%
- 17% to 33%
- 33% to 50%
- 50% to 67%
- 67% to 83%
- 83% to 100%

0 .9 1.8 2.7
Miles

**2010 Black + Hispanic
Population % with
2002 Senate Districts
Nassau County Detail**

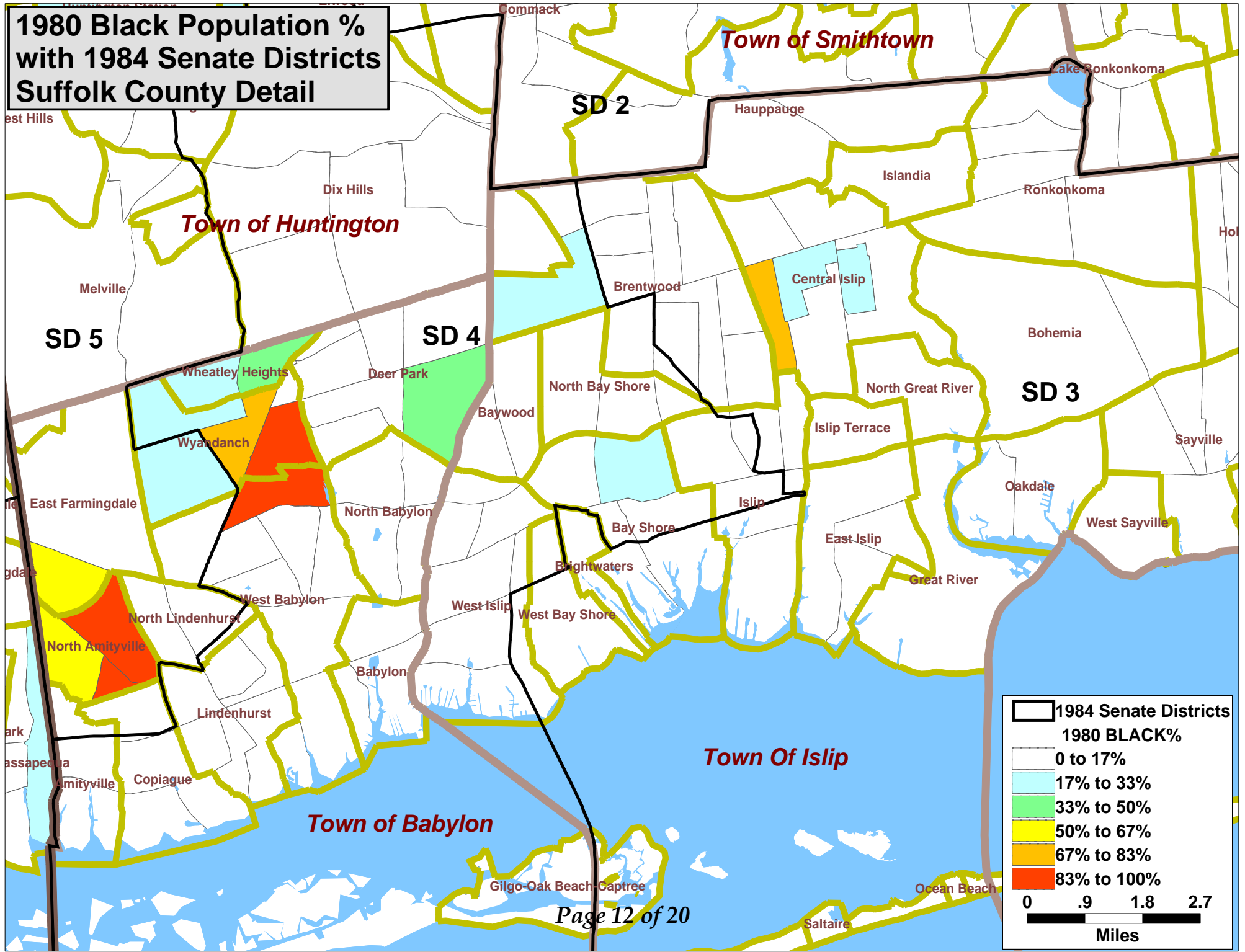


**1970 Black Population %
with 1972 Senate Districts
Suffolk County Detail**



	Census Tract
	Census Place
	County Subdivision
	County
	1972 Senate Districts
1970 BLACK%	
	0 to 17%
	17% to 33%
	33% to 50%
	50% to 67%
	67% to 83%
	83% to 100%

**1980 Black Population %
with 1984 Senate Districts
Suffolk County Detail**



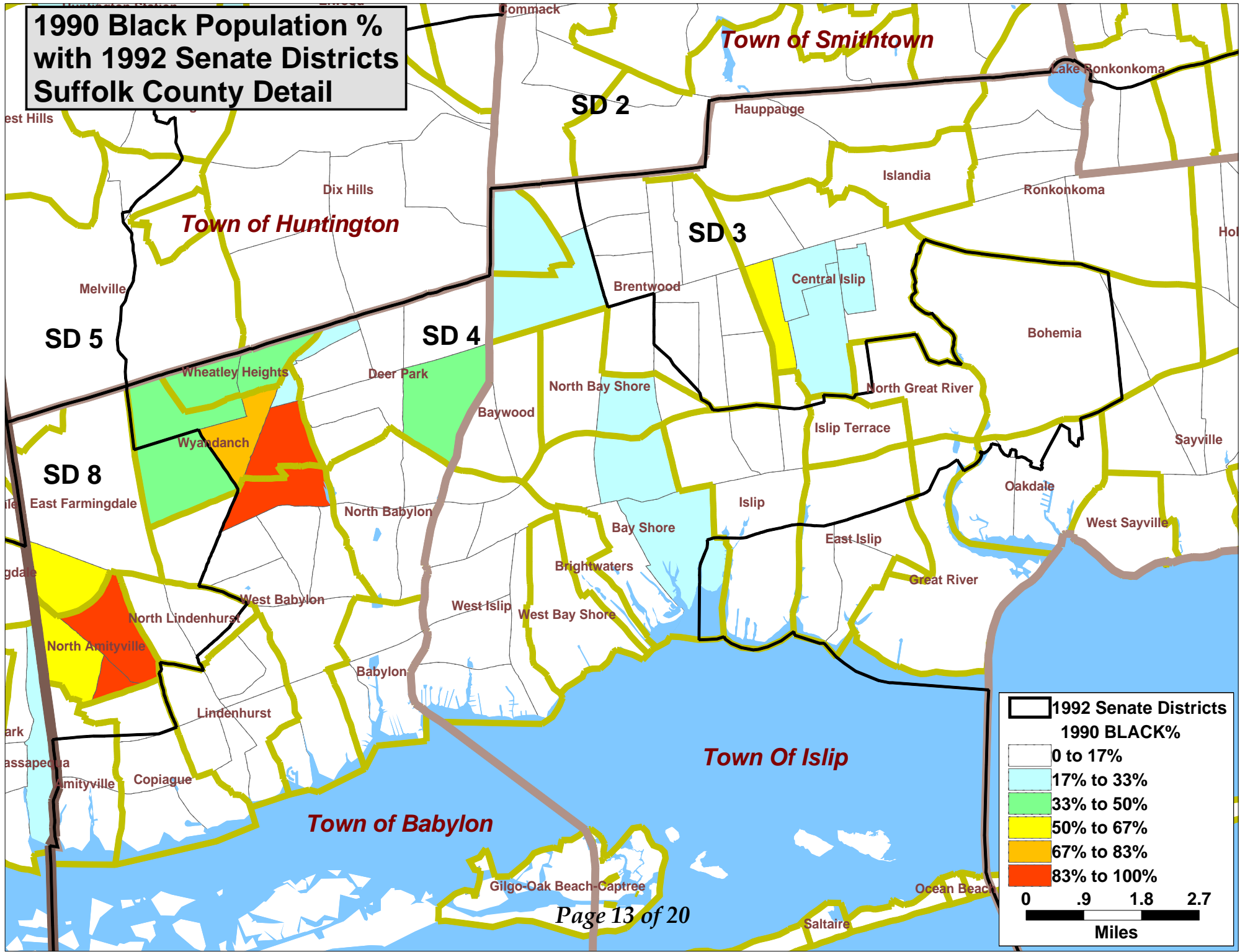
1984 Senate Districts

1980 BLACK%

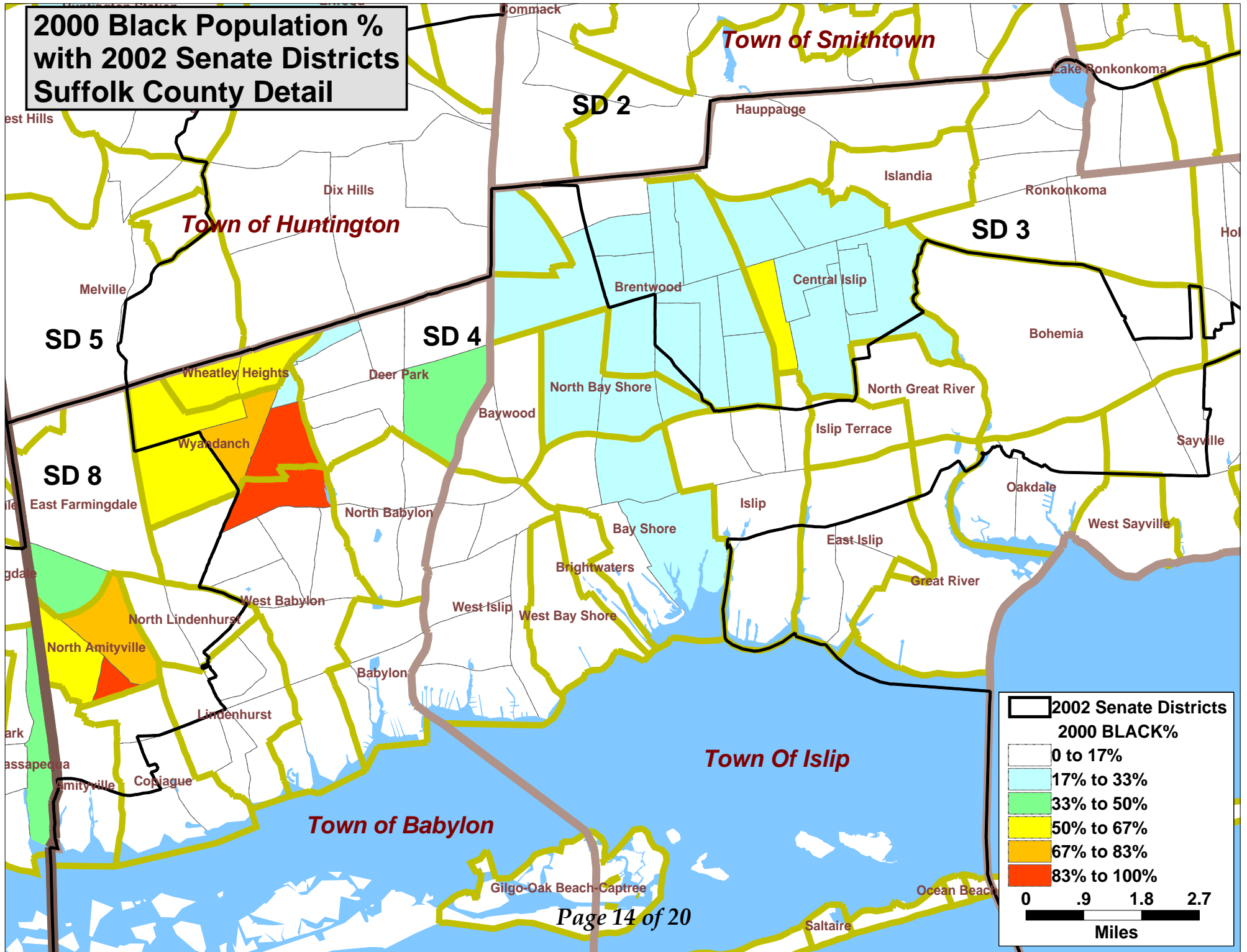
- 0 to 17%
- 17% to 33%
- 33% to 50%
- 50% to 67%
- 67% to 83%
- 83% to 100%

0 .9 1.8 2.7
Miles

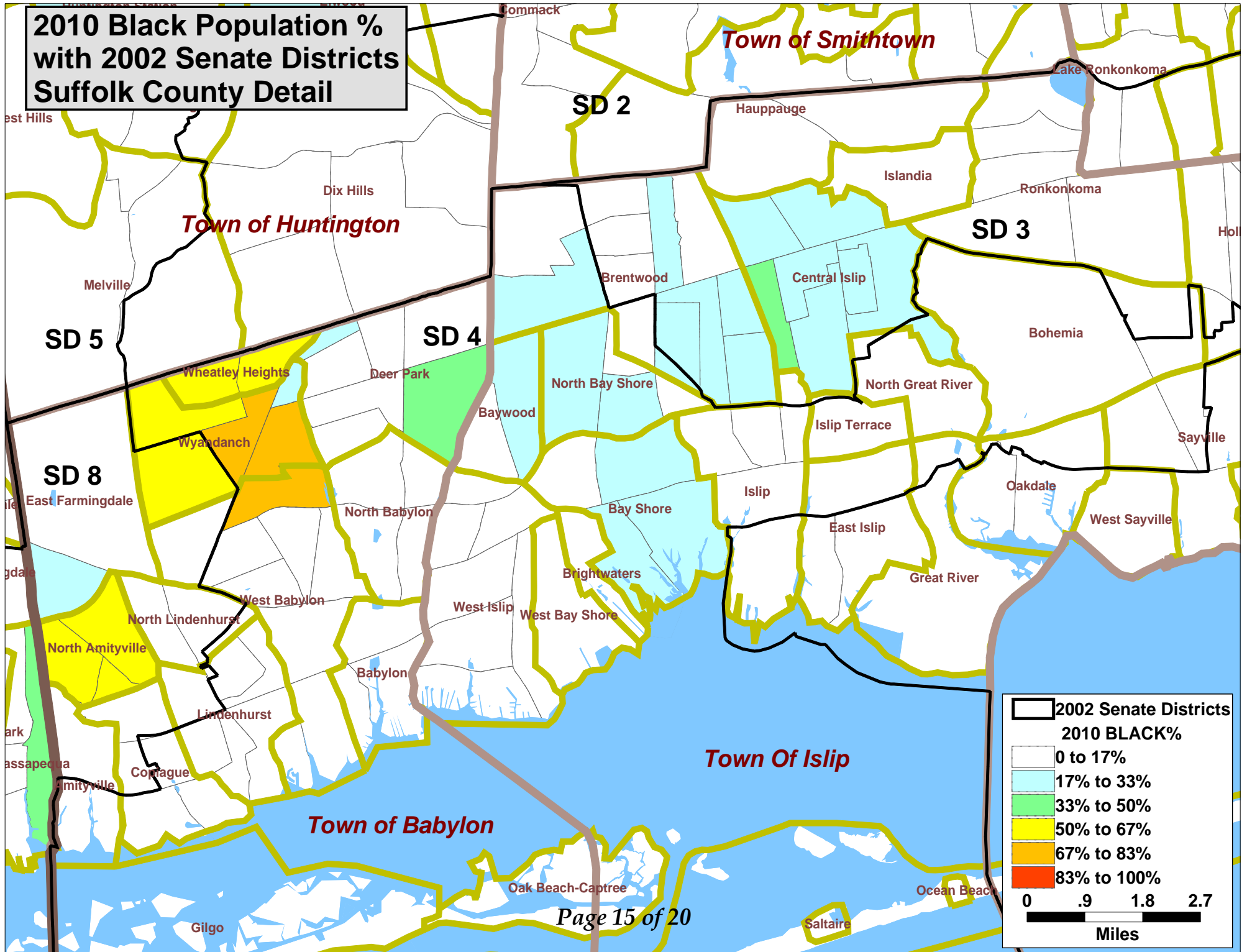
**1990 Black Population %
with 1992 Senate Districts
Suffolk County Detail**



**2000 Black Population %
with 2002 Senate Districts
Suffolk County Detail**



**2010 Black Population %
with 2002 Senate Districts
Suffolk County Detail**



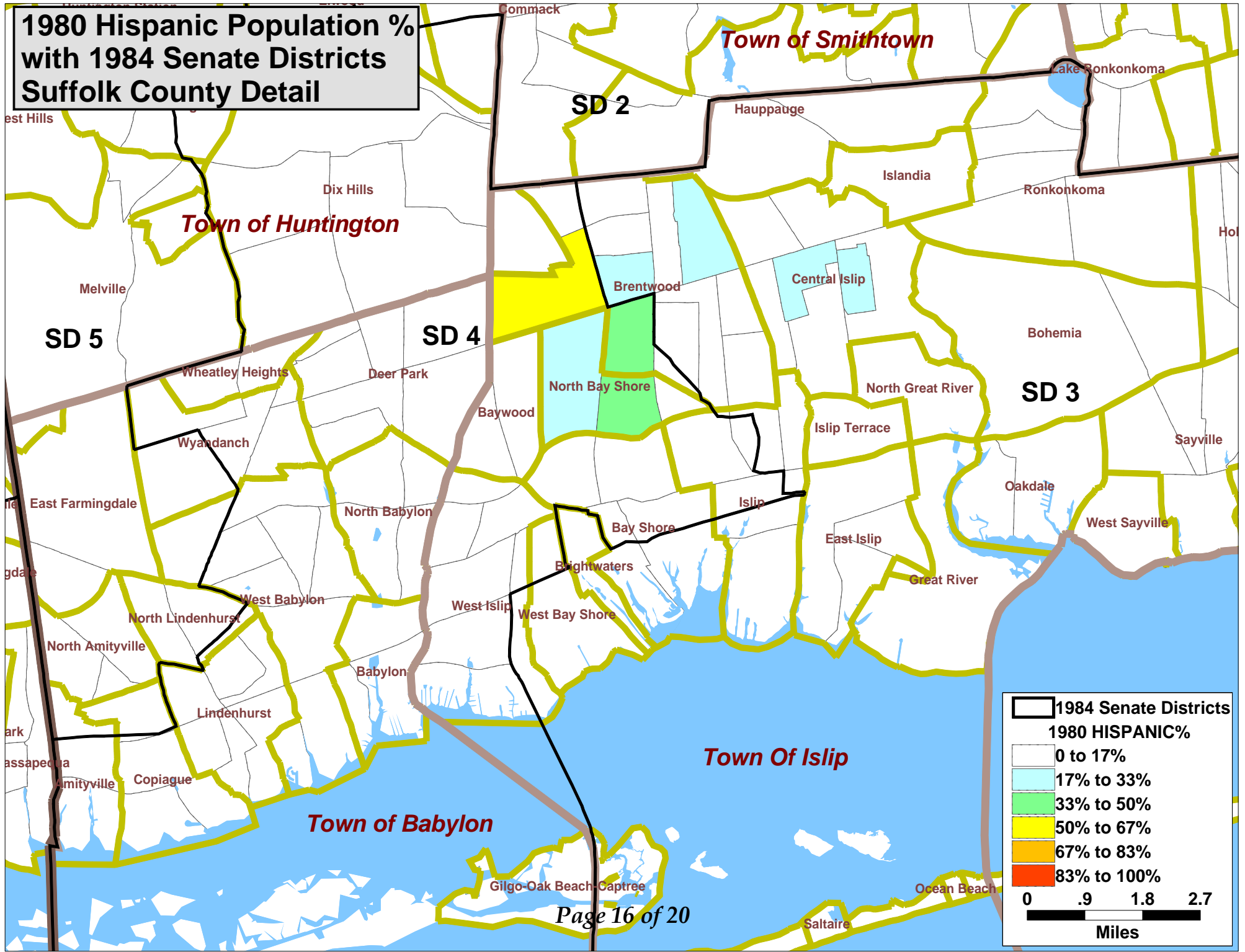
2002 Senate Districts

2010 BLACK%

- 0 to 17%
- 17% to 33%
- 33% to 50%
- 50% to 67%
- 67% to 83%
- 83% to 100%

0 .9 1.8 2.7
Miles

**1980 Hispanic Population %
with 1984 Senate Districts
Suffolk County Detail**



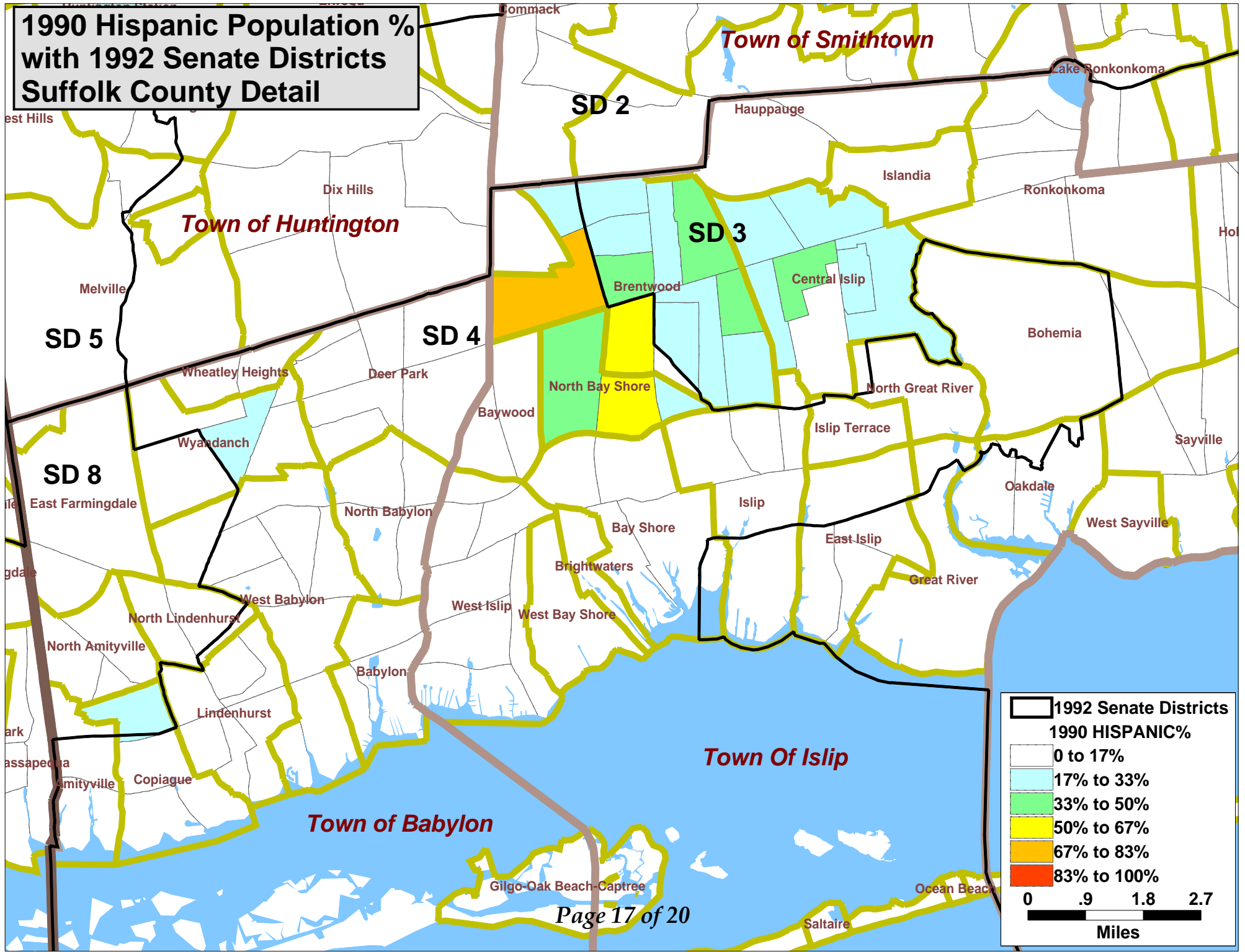
1984 Senate Districts

1980 HISPANIC%

- 0 to 17%
- 17% to 33%
- 33% to 50%
- 50% to 67%
- 67% to 83%
- 83% to 100%

0 .9 1.8 2.7
Miles

**1990 Hispanic Population %
with 1992 Senate Districts
Suffolk County Detail**



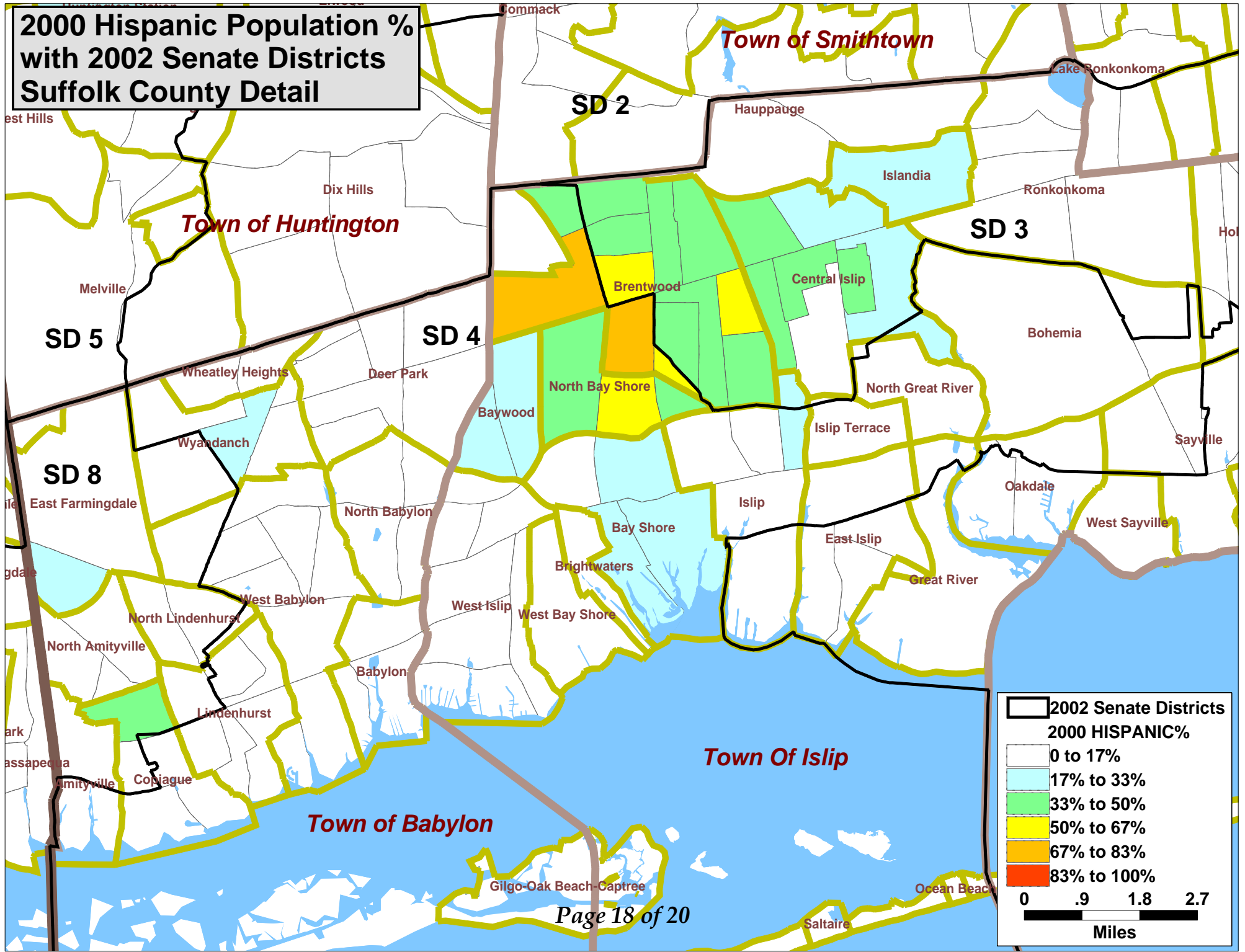
1992 Senate Districts

1990 HISPANIC%

- 0 to 17%
- 17% to 33%
- 33% to 50%
- 50% to 67%
- 67% to 83%
- 83% to 100%

0 .9 1.8 2.7
Miles

**2000 Hispanic Population %
with 2002 Senate Districts
Suffolk County Detail**



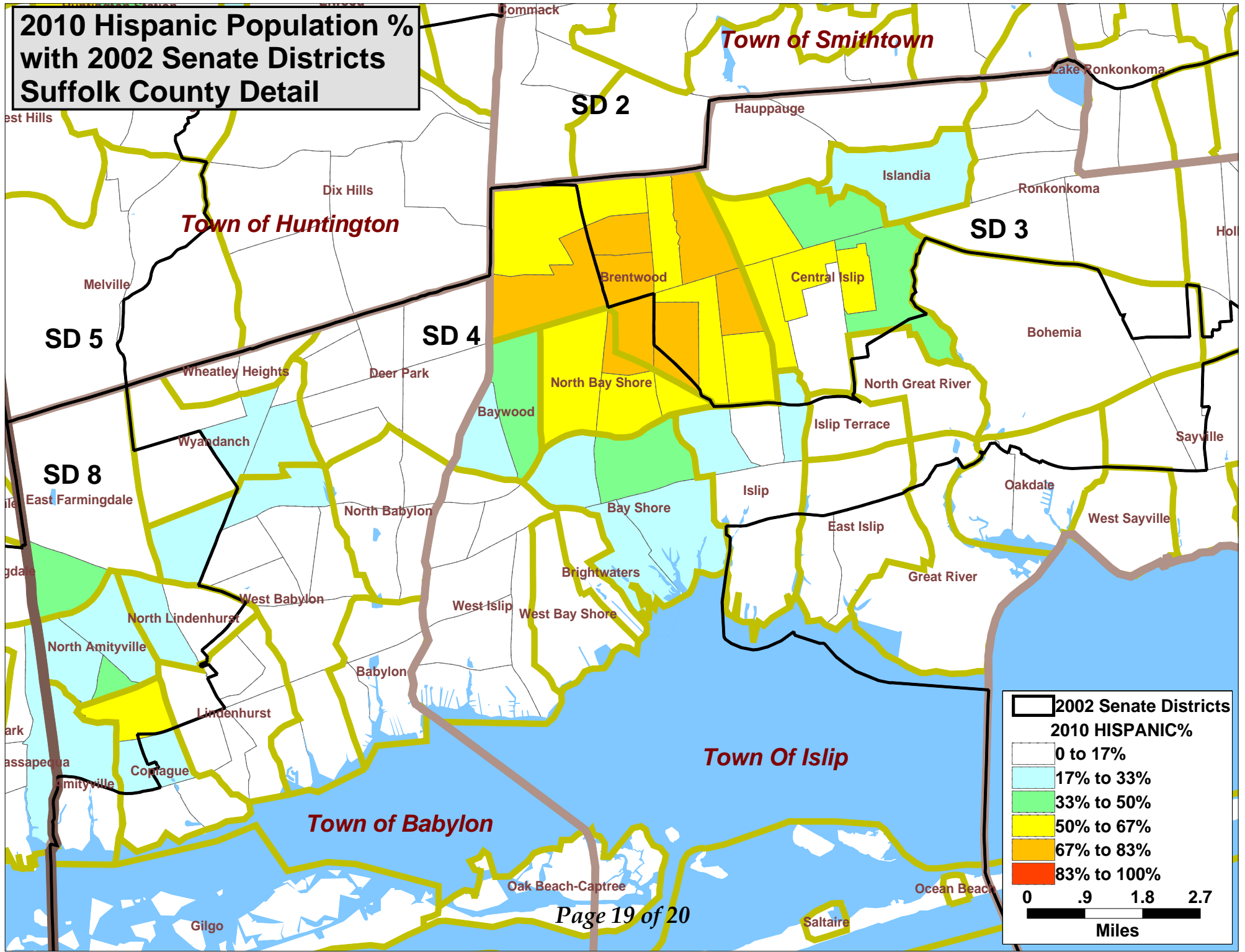
2002 Senate Districts

2000 HISPANIC%

- 0 to 17%
- 17% to 33%
- 33% to 50%
- 50% to 67%
- 67% to 83%
- 83% to 100%

0 .9 1.8 2.7
Miles

**2010 Hispanic Population %
with 2002 Senate Districts
Suffolk County Detail**



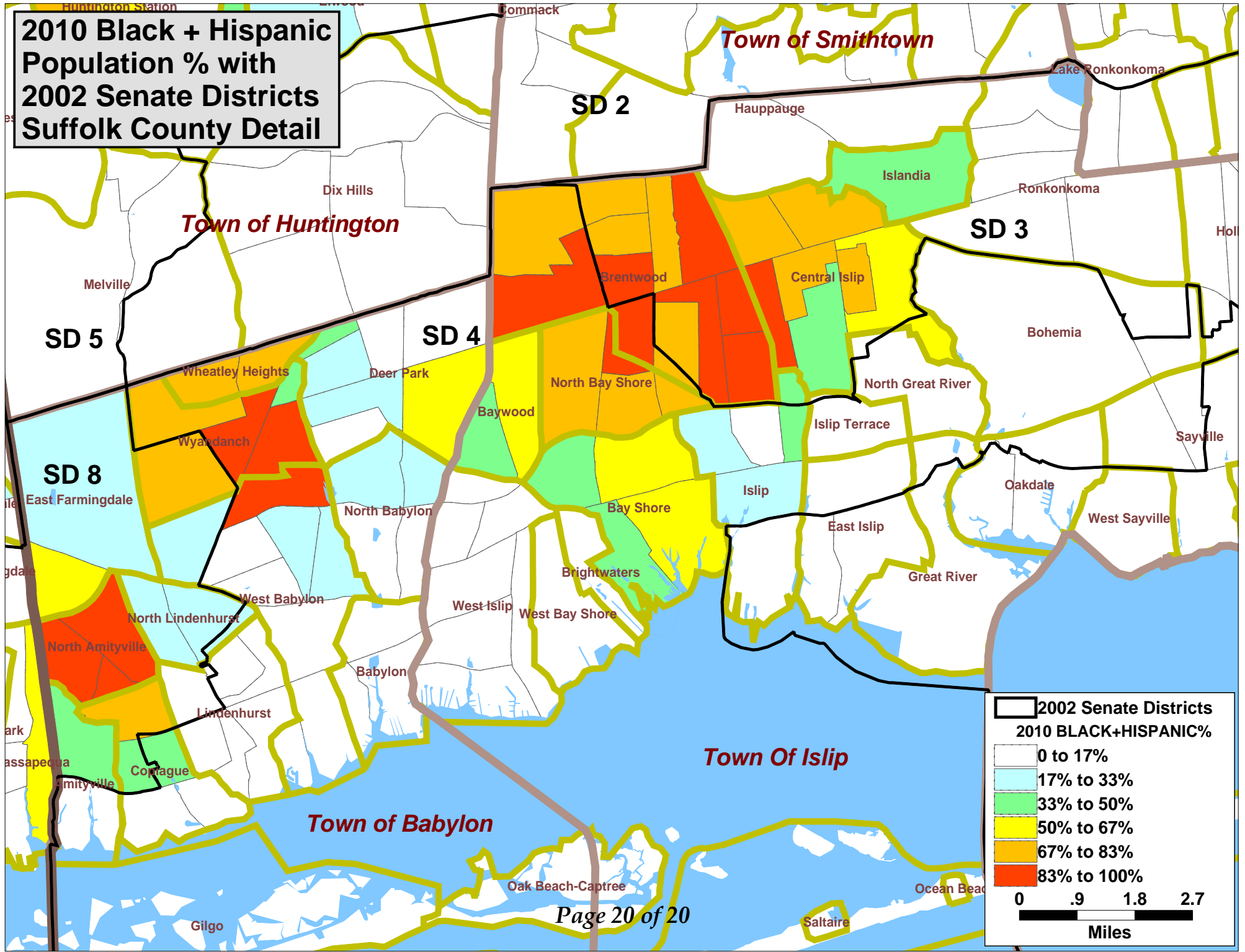
2002 Senate Districts

2010 HISPANIC%

- 0 to 17%
- 17% to 33%
- 33% to 50%
- 50% to 67%
- 67% to 83%
- 83% to 100%

0 .9 1.8 2.7
Miles

**2010 Black + Hispanic
Population % with
2002 Senate Districts
Suffolk County Detail**



2002 Senate Districts

2010 BLACK+HISPANIC%

- 0 to 17%
- 17% to 33%
- 33% to 50%
- 50% to 67%
- 67% to 83%
- 83% to 100%

0 .9 1.8 2.7
Miles